



MONTHLY MEMBERSHIP PROGRESS REPORT

District 5M 2

Results as of: 06/30/2019

GMT: OPEN

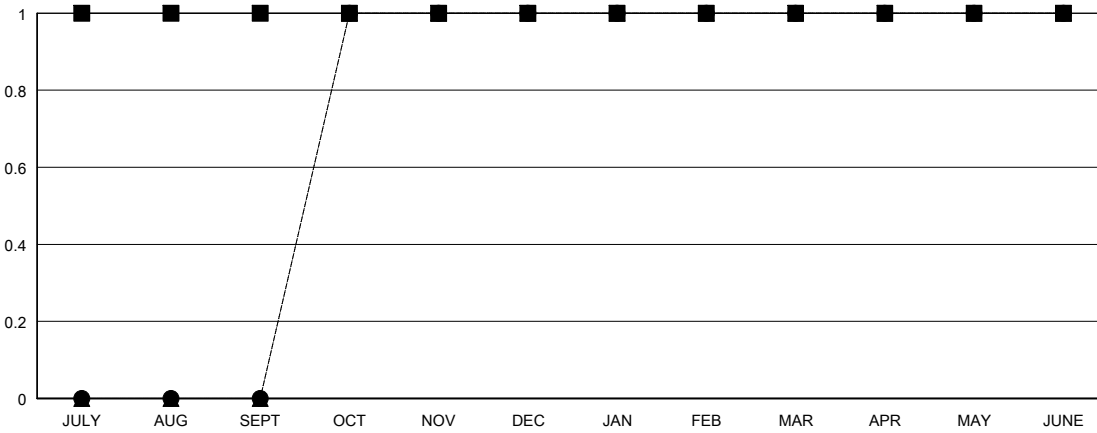
LOCATION MINNESOTA

GMT CA

Clubs			
RESULTS FOR 2018-2019			
QUARTER	NEW CLUB GOAL	NEW CLUBS	DROPPED CLUBS
JULY/AUG/SEPT	1	0	0
OCT/NOV/DEC	0	1	1
JAN/FEB/MAR	0	0	0
APR/MAY/JUNE	0	0	0

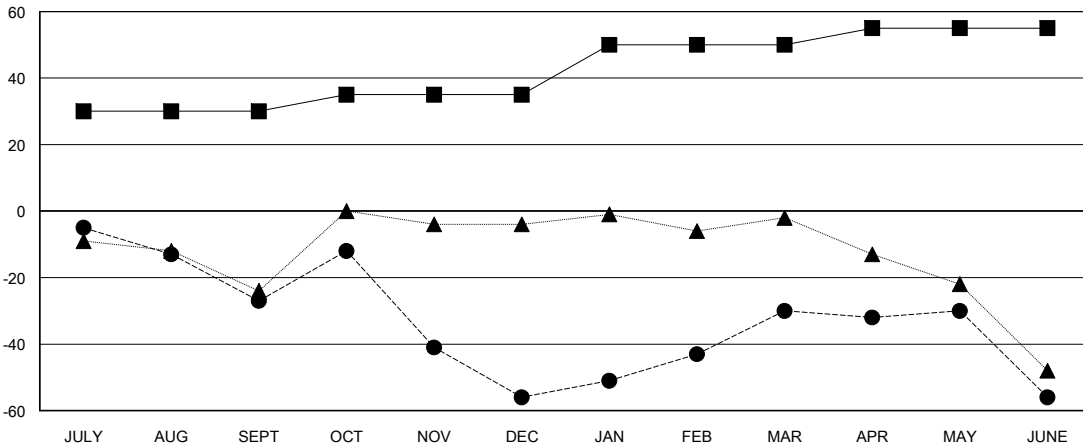
Members			
RESULTS FOR 2018-2019			
QUARTER	MEMBER GROWTH NET GOAL	MEMBER GROWTH ACTUAL	DROPPED MEMBERS ACTUAL (including transfers)
JULY/AUG/SEPT	30	26	46
OCT/NOV/DEC	5	65	92
JAN/FEB/MAR	15	55	27
APR/MAY/JUNE	5	46	71

GOALS AND ACTUAL NEW CLUBS CUMULATIVE



- - CURRENT YEAR GOALS FOR NEW CLUBS
- - CURRENT YEAR ACTUAL NEW CLUBS
- ▲ - LAST YEAR ACTUAL NEW CLUBS

GOALS AND ACTUAL MEMBERS CUMULATIVE



- - MEMBER GROWTH NET GOAL
- - MEMBER GROWTH ACTUAL
- ▲ - LAST YEAR MEMBERSHIP ACTUAL

DROPPED CLUBS: 1

46 CLUBS OF 66 ADDED 1 OR MORE NEW MEMBERS

GENDER DISTRIBUTION	
MALE	1,667 (70.28%)
FEMALE	705 (29.72%)
Women Percentage Fiscal Year Goal: 30%	

DROPPED MEMBERS	
DECEASED	46
CLUB CANCELLED	0
OTHER	190
TOTAL	236

[CLICK HERE FOR CUMULATIVE MEMBERSHIP DATA](#)

TOTAL FAMILY UNIT MEMBERS	399
FAMILY MEMBERS PAYING HALF DUES	202